

Exhibit A
Of Timber Sale Contract
KL-341-2026-W00638-02
Catfish Timber Sale
Located in Portions of Sections
6, T25S R10E, and Portions of
Sections 30, 31, 32, of T24S R10E
W.M., Klamath Country, Oregon
Net Acres: 771

- Catfish Timber Sale
- Project Points
- www Road Maintenance
- Federal or State highway
- All weather
- Dirt
- Mainline Rd
- Blocked
- Board of Forestry Lands

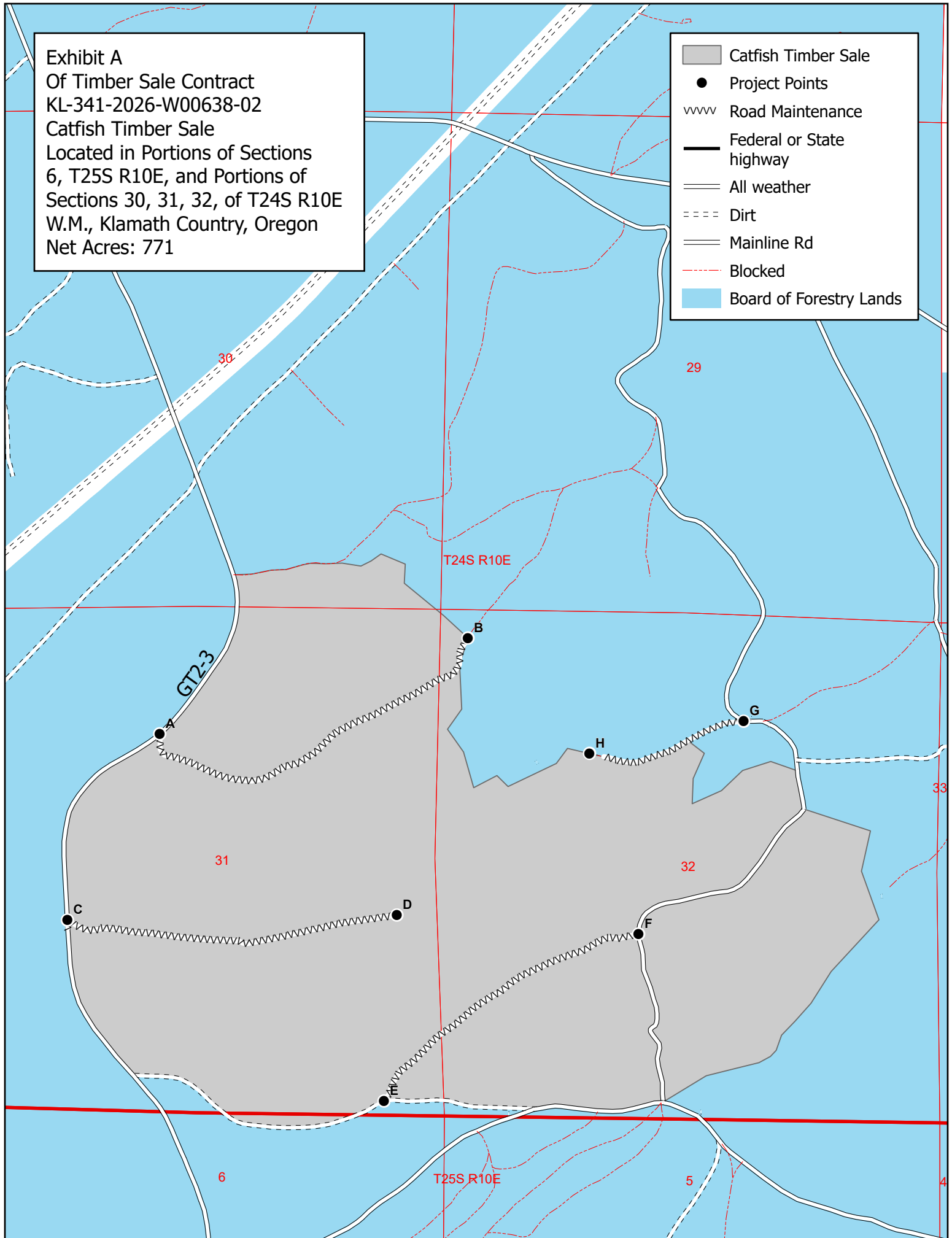


Exhibit A
Vicinity Map
Of Timber Sale Contract
KL-341-2026-W00638-02
Catfish Timber Sale
Located in Portions of Sections
6, T25S R10E, and Portions of
Sections 30, 31, 32, of T24S R10E
W.M., Klamath Country, Oregon
Net Acres: 771

- Catfish Timber Sale
- Route
- Federal or State highway
- All weather
- Mainline Rd
- Board of Forestry Lands

